



69 West Washington Street, Suite 3500 • Chicago, Illinois 60602-3027 • www.dph.illinois.gov

February 26, 2019

VIA EMAIL

Mayor Frank Trilla
Village of Willowbrook
835 Midway Drive
Willowbrook, IL 60527

Re: Update #6 on cancer incidence study activities

Dear Mayor Trilla and Willowbrook officials:

IDPH is providing this sixth update on the epidemiologic study that will assess cancer incidence in the population surrounding the Sterigenics facility in Willowbrook, IL. In this update, IDPH is detailing the geography of the study areas and providing maps of the two study areas.

Results are going to be presented for two study areas. The first study area comprises the entirety of 9 census tracts: 8454.01, 8454.02, 8459.01, 8459.02, 8458.05, 8458.10, 8458.11, 8455.07, and 8455.08. These census tracts cover the EPA air sampling and the air dispersion map from the 39 validated samples USEPA collected on May 16th and May 17th, 2018; those samples were used by ATSDR in its evaluation presented in August 21, 2018 Letter Health Consultation. See Study Area 1 map. The second study area consists of 17 whole census tracts (8454.01, 8454.01, 8454.02, 8459.01, 8459.02, 8455.02, 8455.10, 8455.09, 8455.06, 8455.05, 8455.07, 8455.08, 8458.03, 8458.10, 8458.11, 8458.05, 8202.01, and 8201.01). See Study Area 2 map. Using census tracts is critical in order that suitable population data can be utilized in computations.

As the IDPH cancer epidemiologists are working hard to complete the report, this is most likely the final update before completion of the cancer incidence study by the end of March, 2019. As we mentioned in the prior update, we will be conducting a peer review process on the draft report before it is released.

Sincerely,

Bill Dart, MBA

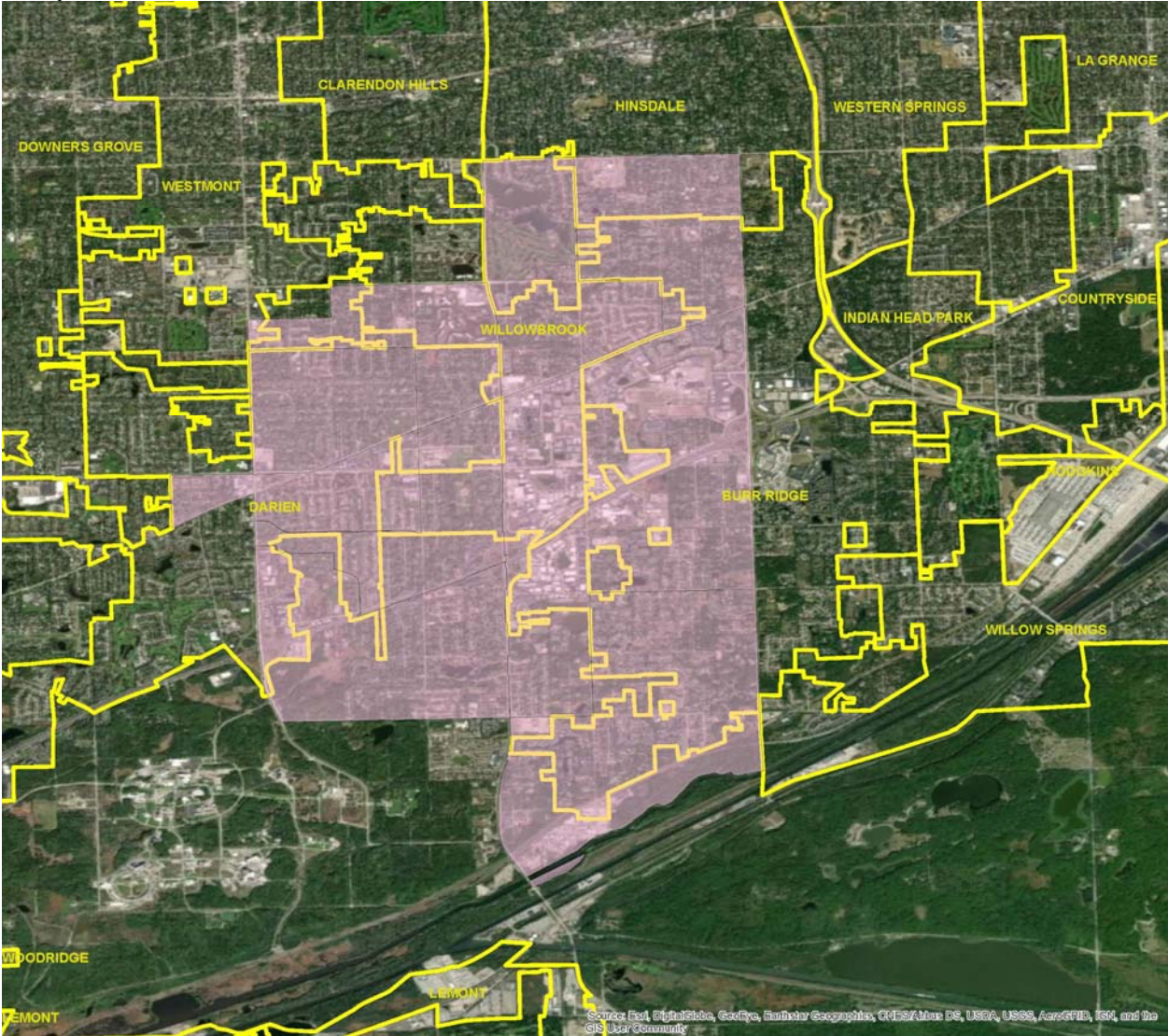
Deputy Director, Office of Policy, Planning and Statistics

cc: Ngozi Ezike, MD, IDPH Director
Tiefu Shen, Division Chief, Epidemiologic Studies

PROTECTING HEALTH, IMPROVING LIVES

Nationally Accredited by PHAB

Study Area 1



Study Area 2

